

# CERTIFICATE OF LOCATION OF GOVERNMENT CORNER

NORTH QUARTER Corner of Section 1, Township 106, Range 39, 5TH P.M.

STATE OF MINNESOTA, County of MURRAY

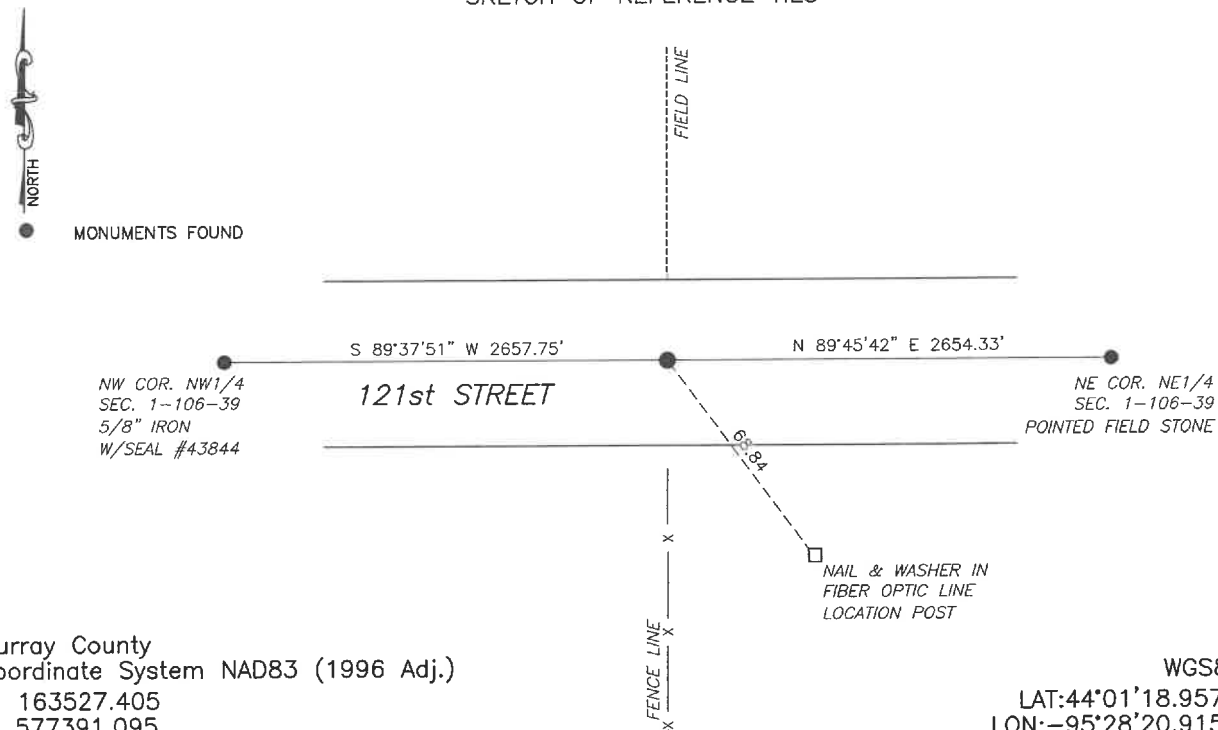
At the corner location shown on the sketch:

☒ On 7/22/2024 found a Large Eye Bolt with pieces of concrete around it.  
DATE

☒ left monument as found, ☐ lowered monument, ☐ removed monument (explain)

☒ On 1/16/2025 placed a 5/8" iron with seal #43844 over top of the large eye bolt  
DATE

## SKETCH OF REFERENCE TIES



Murray County  
Coordinate System NAD83 (1996 Adj.)  
N: 163527.405  
E: 577391.095

WGS84:  
LAT:44°01'18.9572"  
LON:-95°28'20.9153"

Statement of evidence relative to this corner location is on back of page.

I hereby certify that this document and the data contained herein was prepared by me or under my direct supervision.

Daniel L. Buettel  
License No. 43844

3/12/2025  
DATE

MAR 13 2025

Karen Bram  
MURRAY COUNTY RECORDER

Statement of Evidence

NORTH QUARTER CORNER SECTION 1, T106N, R39W OF THE 5th P.M.

In September 1858, W.J. Neely surveyed the east township line.

In July of 1861, J.W. Myers surveyed the north, south, and west township lines.

In August of 1861, Wellman & Smoot subdivided the township.

On June 28, 2024 BuelteI-Moseng Surveying searched in the centerline of the road and in line with fence line to the south with a metal locator and found nothing.

On July 22, 2024 returned with a backhoe and found a 20" long large 1" eye bolt in the center of the road and in line with the fence to the south. Accepted monument as the corner.

On January 16, 2025 placed a  $\frac{5}{8}$ " iron with seal #43844 over top of the eye bolt.